

Phanteks Evolv Sound Mini - manual

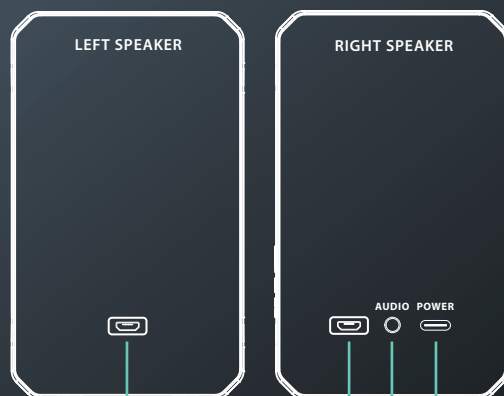
PHANTEKS EVOLV SOUND MINI

V 1.0

The Evolv Sound Mini speakers are plug-and-play and allow for easy audio and lighting control.

- Audio and lighting are controlled independently.
- Plug-and-play thanks to manual control.

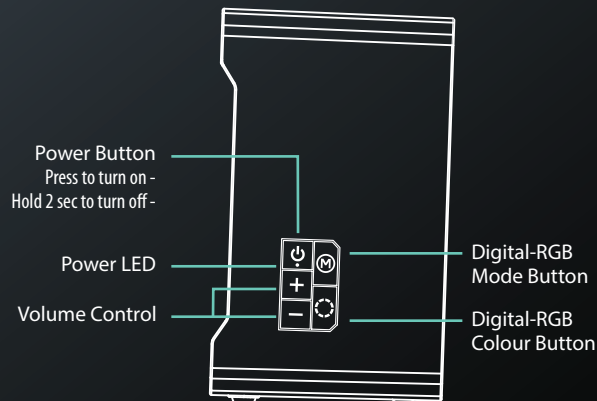
INSTALLATION



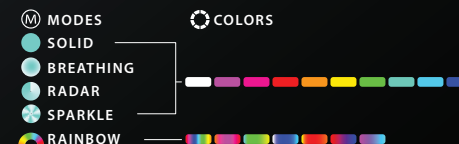
- 1 Connect Left and Right speaker with the Micro-USB cable.

- 2 Connect the 3.5mm Audio Jack cable to the AUDIO port and the audio source.
- 3 Connect the USB cable to the POWER port and computer/USB power source.
We recommend to connect with USB 3.0 or 1A charger.

CONTROLS



Digital-RGB CONTROLS



2 SEC PRESS AND HOLD THE MODE BUTTON TO TURN OFF LEDS